

Technical specification	Description
Electrical Requirements	220VAC/110VAC,50 or 60Hz,200VA
Operation Interface	Available in English, French, Spanish, German and Chinese
Flow Rate	0.1–10 ml/sec. in increments of 0.1 ml/sec.
Syringe Capacity	115ml for Zenith–C11; 200ml for Zenith–C22
Volume	0.1 ml to syringe capacity in 0.1 ml increments
Pressure	Preset limit: 300 psi default, user settable from 50 to 350 psi in 1 psi increments Display: Real–time pressure curve Change threshold: Stop injection if pressure changing suddenly Alarm: Voice alarm and stop injection when over preset limit
Injection or Scan Delay	0 to 3599 seconds in 1 sec. increments
Autofill	Settable flow rate from 3 – 8ml/sec., volume from 10ml to syringe capability
Injection Capabilities	Programmable up to 8 phases
Pause Phase	0–999 sec. in 1 sec. increments
Hold Capability	30 minutes max
Storage Capabilities	1000 protocols
Expel air locked	Unable to inject unless expelling air
Test injection	Settable flow rate from 0.1 – 5ml/sec., volume from 0.1ml to 10ml
Heat maintainer	35–38°C(optional)
Hand switch	Hand switch control pause and continue injection (optional)
Emergency stop function	When the system is injecting, click on any point of the touch screen or any button on the injector arm, the system will stop injection
Dual Flow	Settable in a ratio of saline and contrast
KVO	Independent KVO program
Dimension	Injector Arm and Pedestal:L:22.8*(58.0cm),W:12.5*(20.1cm),H:50.2*(127.4cm) Console:L:4.55*(11.55cm),W:12.68*(31.8cm),H:9.77*(24.81cm)
Weight	Injector Arm and Pedestal:19.5Kg Console:4.1Kg



400C

## CT Dual Syringe Injection System



The company is entitled to change the size and shape without any notice following the national regulations on the medical devices.



P/N:C11/22-BR07(10)001 REV. C/1. 2019.8



# CT Dual Syringe Injection System

400X provides saline flush capabilities and robust protocol options for the most advanced clinical applications. Designed for complex CTA and Cardiac CT protocols. Creates a tight contrast bolus for better visualization. Enables precisely timed contrast delivery.

## User-Friendly Operations

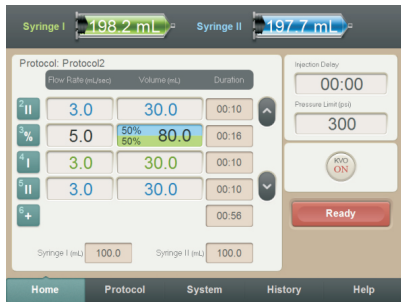
- 12" wide touch screen console, capable of setting 8 different injecting phases easily
- All operations can be performed on the console and through the injector arm control
- The LED displayer on the injector head can display in real-time the amount of contrast medium
- Smart operation keys, designed to complete all functions by minimal keying

## Reliability & Safety

- Accurate control injecting speed and volume
- Comprehensive real-time monitoring the pressure and system operating states
- Remote control of injection to reduce the radiations harmful to the operators
- Air-extraction warning before injections, reduce mis-operation

## Scientific & Humanized Design

- The injector arm's height and direction are adjustable.
- The pedestal can be moved and locked randomly at expected place.
- The accessory tray frees the user's hands to focus on the operation.



## Real-time injection pressure monitoring

With the highly sensitive pressure transducers, it can display the pressure waveforms of injections, control the pressure in the pre-set ranges, monitor the pressure derivative values, control the injecting procedure and effectively reduce the leakage and save the contrast medium.

## Saline Flush and Dilution

Saline flush can form much more denser contrast media bolus. It will boost the accuracy of contrast injecting time, reduce the waste of contrast substance and diminish the imaging artifacts in the torso scan.

In the coronary imaging, diluting saline injection can make the ventricles and coronary arteries have the consistent contrast densities. Which can boost the image clarity with minimal artifacts.

## Dual Flow with Setting Motion Ratios

CT injector system option is more than a saline flush after a contrast bolus. Operation can inject both contrast and saline at the same time with setting motion ratios. With the proper ratio, left and right hear ventricles can be illuminated uniformly or improved image quality.

## Flexible 8 phases injection setting protocols

Clear and simple console operation, flexible & customized protocol setting interface. Users can easily set one phase injection or complex 8 phases injection as well to meet the needs of all clinic application.



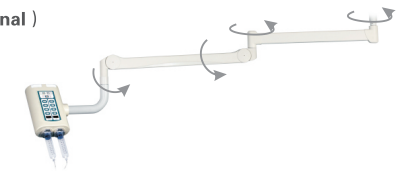
Injector Arm and Main Controller



Console

## Suspension system of injector arm (Optional)

- Save space of scanning room
- Operation more flexible
- Injector arm easier move to right position



P/N C01-006-10

Consumables for 400C/1 dual syringe CT injector (two 100mL syringes, one Y-type extension tube, two filling tubes)



P/N C01-010-10

Consumables for 400C/2 dual syringe CT injector (two 200mL syringes, one Y-type extension tube, two filling tubes)